

Introduction to IT900A



DCSK Turbo

YITRAN TECHNOLOGIES

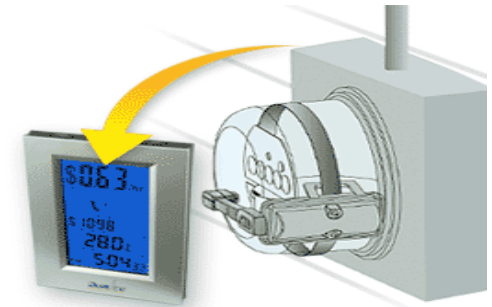
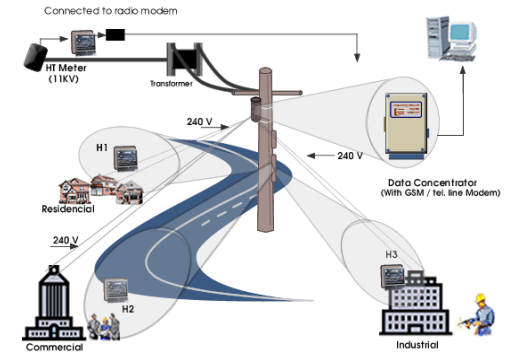
IT900A Main Features

- Low-cost Powerline Communication (PLC) modem and application solution in a single chip.
- Data rates (PHY) up to 500 Kbps FCC and ARIB, 150 Kbps in CENELEC-A band and 50 Kbps in CENELEC-B.
- Implements DCSK and DCSK Turbo Modulation - Natural extension to DCSK based technology.
- Fully backward compatible with IT700 and IT800 Series.
- Incorporates Yitran's high performance Data Link Layer (DLL), Network Protocol (Y-Net) and extremely robust Physical Layer (PHY).
- High in-phase & cross-phase connectivity. Full coverage even under adverse line conditions.
- Embedded AFE (external Amplifier is not required!).

- **Smart Grid Applications:**
 - Automated Meter Reading (AMR)
 - Advanced Meter Management (AMM)
 - Demand Response & Real-Time pricing

- **Smart Home & Energy Management:**
 - Home & Building Automation
 - Home Appliance Control & Diagnostics
 - Security and Access Control
 - Environmental Control

- **Commercial Applications:**
 - Street Light Control
 - Solar Panels Monitoring
 - Vending Machine Control
 - Signage Control



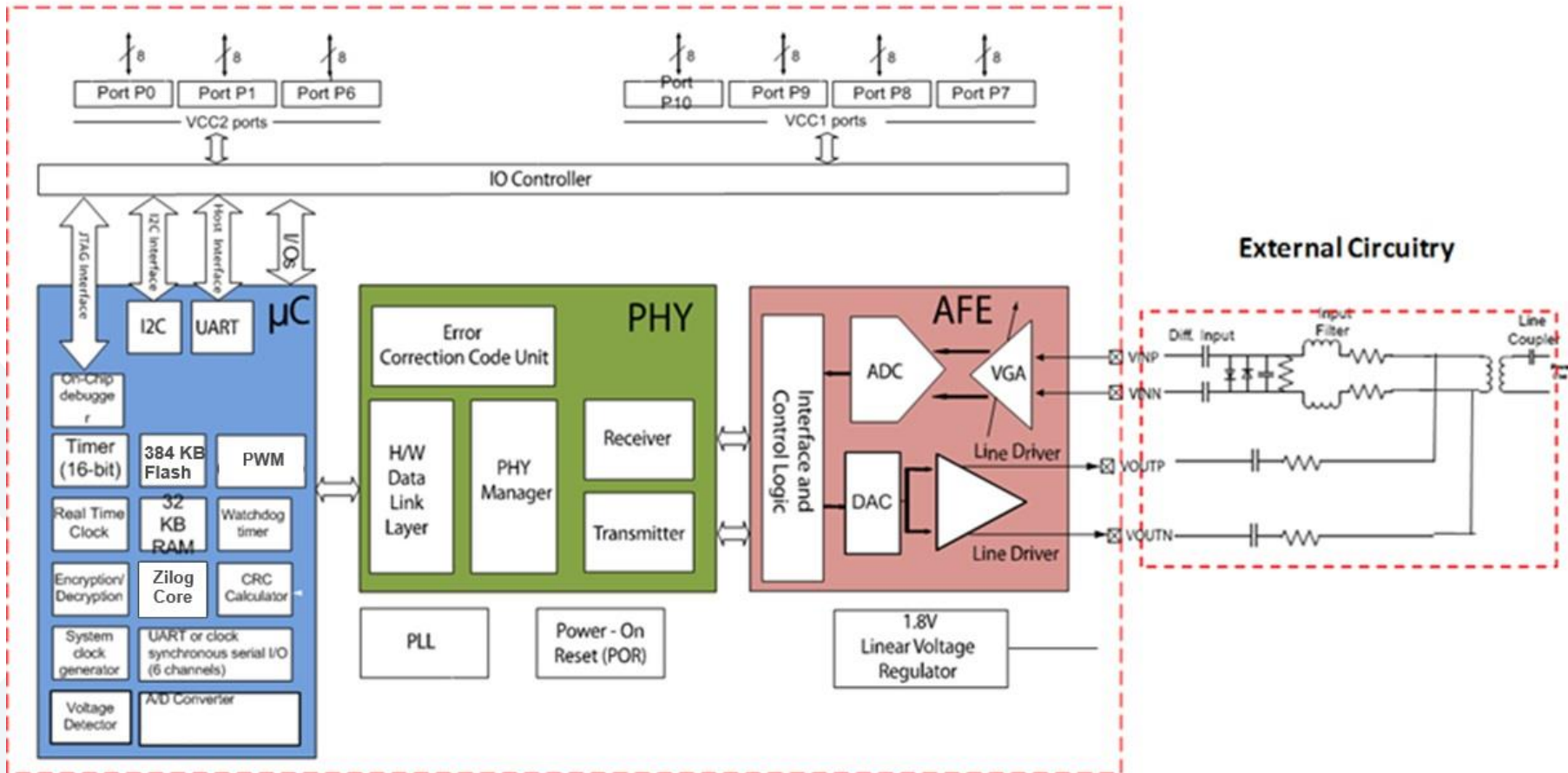
IT900A - DCSK Turbo Specification

- Physical Layer Rate: 500 kbps FCC, 150 kbps CA and 50 kbps CB
- Dynamic Range: >100dB
- SNR for AWGN < -7dB
- SNR for CW Noise < -40dB
- House Coverage ~ 100%
- Range > 2 Km
- Network Size: 2000 nodes
- Number of Networks: 1000
- Power Consumption in Rx < 300 mW
- Single supply voltage: 3.3V
- Package: QFN64

*Proven as the most robust
technology available today*

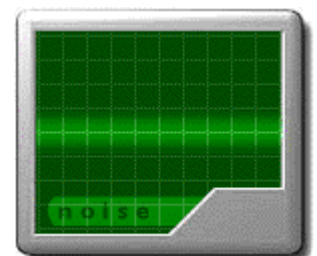
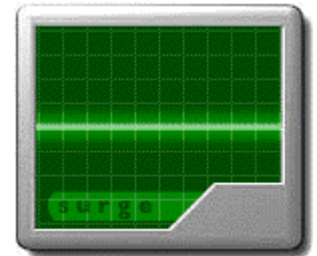
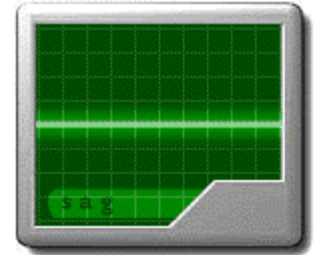
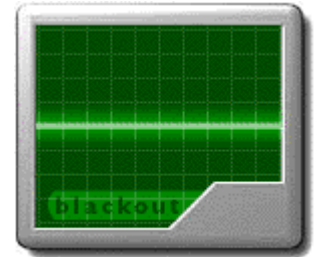
IT900A Block Diagram

IT900A IC



Physical Layer Basics

- Modulation: Patented DCSK and DCSK Turbo implementing advanced coherent spread spectrum modulation techniques
- Error Correction: Forward short-block soft decoding error correction mechanism and CRC-16
- High immunity to signal fading, noise, impedance modulation and phase/ frequency distortions
- Symbols: Spread Spectrum, fully compliant with worldwide regulations (FCC, CENELEC A&B, ARIB)
- Preamble: DCSK based variable length preamble



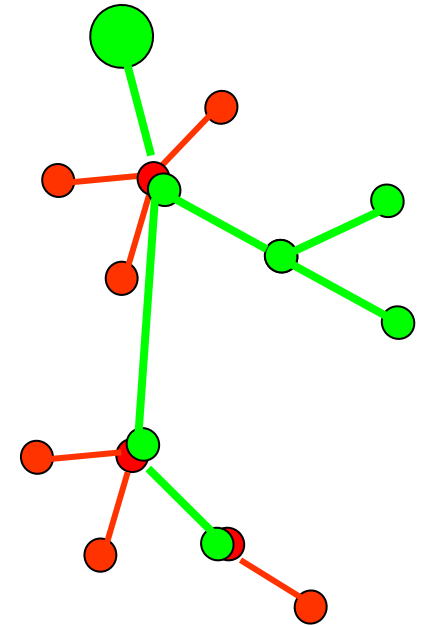
MAC Layer Basics

- Channel Access:
 - Adaptive Optimized CSMA/CA with Transmission Priority and Delay Control Mechanism.
- Auto Rate Control:
 - Selects Optimal Communication Rate Automatically
- Transmission Services:
 - Internetwork Unicast & Broadcast.
 - Intranetwork Unicast & Broadcast.
- Upper Layer Channel and Packet Monitoring
- Optional Security Suite (depending on layer model)
- Maximum Payload Length – 1760 bytes

APPLICATION
PRESENTATION
SESSION
TRANSPORT
NETWORK
DLL
PHYSICAL

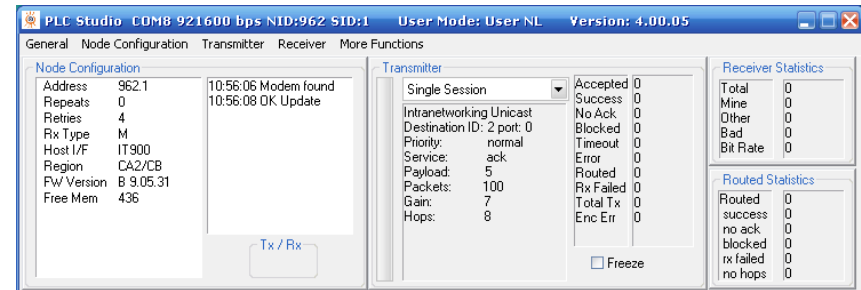
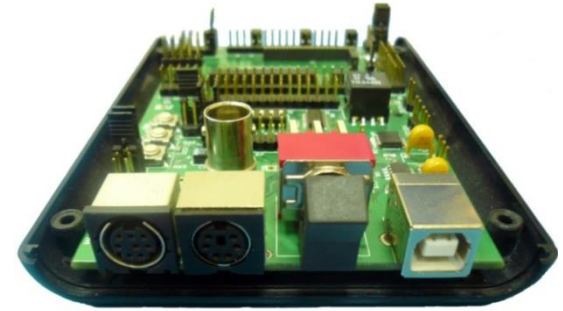
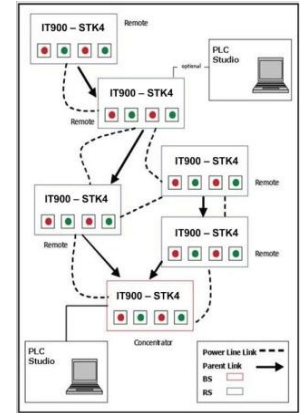
Network Layer Basics

- Plug & Play Network Setup
- Selective and Secure Participation of Nodes
- Automatic Logical Network Creation
- Automatic Node Address Allocation
- Supports Multiple Networks
- Supports Mesh and Tree Topologies
- Master-Slave and Peer-to-Peer Network Configurations
- Automatic and Adaptive Routing Service
- Failure Detection



Development Tools

- YNET Evaluation & Development Kit
 - Allows seamless evaluation of PLC technology
 - Supports a variety of evaluation options
 - Available for FCC, CENELEC-A&B and ARIB bands
 - Full documentation package
 - Easy to use (5 minutes setup)
 - Provides enhanced platform for product development and verification
- PLC Studio PC application
- Application Code Reference
- Application HW Reference



Availability



1. IT900A ICs are available **today** !
2. IT900A PIMs are available **today** !
3. STK available for evaluation and development.

Summary

- DCSK-Turbo Advantages:
 - Designed for PLC media.
 - Proven **best** performance for PLC.
 - Complies with world wide regulations.
- Narrow Band Advantages:
 - **Low** cost.
 - **Best** solution for low cost, low power and high performance.





Yitran Technologies Ltd.
8 HaGoren St., Omer 8496500 Israel
Tel: +972 8 958 0282 Fax: +972 8 958 0281
yitran@yitran.com www.yitran.com